

# THE KITCHEN WAREHOUSE

RESTAURANT SUPPLIES & EQUIPMENT





# Kitchen Utensils

Strainers & Skimmers	104 - 107
Colanders & Bowls	108 - 110
Spoons & Ladles	111 - 115
Can Openers	116 - 117
Ice Cream Dishers	118 - 120
Scoops	121
Whips	122
Tongs 	124 - 125
Small Utensils	126 - 133
Timers	133
Cleaning Items	133
Oven Mitts & Aprons	134 - 135

*E*ven in the face of persistent whisking and rough kitchen usage, Alegacy's stainless steel mixing bowls continue to deliver on their promise of durability and quick cleanup.

# Strainers

Strainers get tossed around more than any other utensils in the kitchen. With this in mind, our quality Italian-made designs are built to withstand the abuse and survive for years, which means savings for you in the long run. Alegacy's strainers are made with metal wire mesh, reinforced wire rims, and double fire tin dipped for the highest level of corrosion protection. Flat handles and pan hooks make these strainers practical and easy to use, and a great value in every commercial kitchen.



## STRAINER - SINGLE MESH

The pan hook and flat-bottom handle balance the strainer over a pan for hands-free operation. They are full bath tinned after fabrication, plus clear lacquered handles. Available in fine or medium mesh.

FINE MESH ITEM	MEDIUM MESH ITEM	BOWL SIZE		HANDLE LENGTH		PACK
		IN	CM	IN	CM	
9091		2 3/4	7	4	10.2	12
9092		4	10.2	5 1/2	14	12
9093	9193	4 3/4	12.1	5 1/4	13.3	12
9094	9194	5 1/2	14	6 1/2	16.5	12
9095	9195	6 1/4	15.8	6 3/8	16.2	12
9096	9196	7 1/4	18.4	6 3/8	16.2	12
9098	9198	8	20.3	6 1/4	15.9	12
9099	9199	10 1/4	26	9	22.9	12



## STRAINER - DOUBLE MESH

Includes pan hooks and a flat-bottom handle, enabling hands-free use. Re-tinned with lacquered wood handles and outer reinforcing mesh. Available in fine or medium mesh.

FINE MESH ITEM	MEDIUM MESH ITEM	BOWL SIZE		HANDLE LENGTH		PACK
		IN	CM	IN	CM	
8095	8195	6 1/4	15.9	6	15.2	12
8098	8198	8	20.3	6 1/2	16.5	12
8099	8199	10 1/4	26	9	22.9	12



## SPLATTER SCREENS

Ideal for containing grease splatter when frying or cooking. Two convenient sizes.

ITEM	DIAMETER		HANDLE LENGTH		PACK
	IN	CM	IN	CM	
SS8	8 5/16	21.1	5 1/4	13.3	12
SS10	10 5/16	26.2	5 1/4	13.3	12



## HEAVY-DUTY STRAINER

Rigid double mesh with reinforcing bands and a heavy wooden handle make this durable strainer perfect for large jobs. The medium mesh is full bath tinned after fabrication.

ITEM	BOWL SIZE		HANDLE LENGTH		PACK
	IN	CM	IN	CM	
9100	9	22.9	9	22.9	6
9150	10 1/4	26	9	22.9	6
9200	12	30.5	17	43.2	6
9250	14	35.6	17	43.2	6

### STAINLESS STEEL SINGLE MESH STRAINER

Double pan hooks and flat-bottom handles.  
Easy-to-clean stainless steel.



ITEM	MESH	BOWL SIZE		O/A LENGTH		PACK
		IN	CM	IN	CM	
S9093	Fine	4 3/4	12.1	5 1/4	13.3	12
S9193	Medium	4 3/4	12.1	5 1/4	13.3	12
S9095	Fine	6 1/4	15.9	13	33	12
S9195	Medium	6 1/4	15.9	12 1/2	31.8	12
S9098	Fine	8	20.3	14 1/2	36.8	12
S9198	Medium	8	20.3	14	35.6	12
S9099	Fine	10 1/4	26	21 1/2	54.6	12
S9199	Medium	10 1/4	26	21	53.3	12



### STAINLESS STEEL DOUBLE MESH STRAINER

Sturdier mesh and rim construction. Easy-to-clean stainless steel.

ITEM	MESH	BOWL SIZE		O/A LENGTH		PACK
		IN	CM	IN	CM	
S8095	Fine	6 1/4	15.9	12 1/2	31.8	12
S8195	Medium	6 1/4	15.9	12 1/2	31.8	12
S8098	Fine	8	20.3	14	35.6	12
S8198	Medium	8	20.3	14 1/2	36.8	12
S8099	Fine	10 1/4	26	21	53.3	12
S8199	Medium	10 1/4	26	21	53.3	12



S9250

S9150

### HEAVY-DUTY STAINLESS STEEL STRAINER

Rigid double mesh with reinforcing bands and a heavy wooden handle make this durable strainer perfect for large jobs where maximum corrosion resistance is needed.

ITEM	BOWL SIZE		HANDLE LENGTH		PACK
	IN	CM	IN	CM	
S9100	9	22.9	9	22.9	6
S9150	10 1/4	26	9	22.9	6
S9200	12	30.5	17	43.2	6
S9250	14	35.6	17	43.2	6

www.kitchenwarehousevi.com



### BOUILLON STRAINER

Tin-plated, extra-fine mesh strainer has reinforced wires and a pan hook for support.

ITEM	BOWL DIAMETER		PACK
	IN	CM	
208WR	8	20.3	1



### BOUILLON STRAINER

Tin-plated with extra-fine mesh. Pan hook provides stability while straining liquids.

ITEM	BOWL DIAMETER		PACK
	IN	CM	
20P	8	20.3	1

### FINE OR COARSE CHINA CAPS

Sturdy 18/8 stainless steel with a perforated metal body. One-piece handle is made to rest solidly on the rim of the pan or comfortably in your hands. The grooved design adds to the strength, while the frame-style handle dissipates heat. Available in fine or coarse model.

FINE CHINA CAPS	COARSE CHINA CAPS	BOWL DIAMETER		
ITEM	ITEM	IN	CM	PACK
S507F	S507C	7	17.8	1
S508F	S508C	8 1/2	21.6	1
S509F	S509C	9	22.8	1
S5010F	S5010C	10 1/2	26.7	1
S5012F	S5012C	12 1/2	31.8	1



### WOODEN PESTLE

Pestles have a cone shaped roller and a large, easy-to-grip handle. For grinding, pressing, and pounding china cap and strainer contents.

ITEM	WORKING SURFACE		O/A LENGTH		PACK
	IN	CM	IN	CM	
22288	5 1/2	14	10 1/4	26	6
22291	7 3/4	19.7	12 1/2	31.8	6



## SKIMMER

The long, hooked handle displaces heat and will allow a greater reach. Skimmer is nickel-plated with spiral wire. Removes particles from stock pots or fryers.

ITEM	BOWL DIAMETER		PACK
	IN	CM	
1305	5	12.7	12
1306	6	15.2	12
1307	7	17.8	12
1308MS	8	20.3	12
1309	9	22.9	12



## SKIMMER

The rigid, long, hooked handle is a low heat transferring design. Nickel-plated with square mesh.

ITEM	BOWL DIAMETER		PACK
	IN	CM	
1305T	5	12.7	12
1306T	6	15.2	12
1307T	7	17.8	12
1308T	8	20.3	12
1309T	9	22.9	12
1312T	12	30.5	12



## HEAVY-DUTY SKIMMER

Handle the toughest kitchen applications with our one-piece satin polished stainless steel skimmers. The long, hooked handle serves as a pot rest.

ITEM	BOWL DIAMETER		PACK
	IN	CM	
374HD	4	10.2	12
375HD	4 3/4	12	12
376HD	6 1/4	15.9	12



## FINE MESH SKIMMER

One-piece handle is low-heat transferring. The fine wire mesh is available in round or square models.

ITEM	DESCRIPTION	BOWL DIMENSIONS		PACK
		IN	CM	
RD650	Round Reinforced	6 1/2	16.5	12
SQ675	Square Reinforced	6 1/2 x 6 1/2	16.5 x 16.5	12
997	Square	5 x 6	12.7 x 15.2	12



## STAINLESS STEEL SKIMMER

Brightly polished stainless steel skimmer is easy to clean. Long, hooked handle serves as a pot rest.

ITEM	BOWL DIAMETER		PACK
	IN	CM	
374SK	4 1/2	11.4	12
375	6	15.2	12



## DOUBLE MESH SKIMMER

Fine, re-tinned mesh with a 17 1/2" (44.5 cm) handle.

ITEM	BOWL DIAMETER		PACK
	IN	CM	
DMS6	6	15.2	12
DMS8	8	20.3	12
DMS9	9	22.9	12

### HEAVY-DUTY ALUMINUM COLANDER

The heavier weight of this colander handles more like a pot: strong, solid, and durable. With the stand-alone base the colander can be placed over the drain for a hands-free rinsing. Riveted handles and rounded edges make this even stronger. Both colanders have 3/16" holes.



ITEM	CAPACITY		DIAMETER		DEPTH		PACK
	QT	L	IN	CM	IN	CM	
CA1611	11	10.4	15	38.1	5 3/4	14.6	2
CA1616	16	15.1	16 1/2	41.9	6 3/8	16.2	2



### ECONOMY ALUMINUM COLANDER

These lightweight colanders feature a stand-alone base for hands-free draining and are easy to handle, particularly when rinsing pasta or vegetables. Riveted handles and rounded edges, on top and bottom, add to the strength.



ITEM	CAPACITY		DIAMETER		DEPTH		PACK
	QT	L	IN	CM	IN	CM	
CA1611E	11	10.4	15	38.1	5 3/4	14.6	2
CA1616E	16	15.1	16	40.6	6 1/2	16.5	2

### ALUMINUM STRAINER

The grooved handle is riveted to the body for exceptional strength. The heavy-duty, dent-resistant body also has a securely riveted pan hook.

ITEM	DIAMETER		DEPTH		PACK
	IN	CM	IN	CM	
HA23	9	22.7	3 1/2	8.9	6
HA26	10 1/4	26	4	10.2	6



### ALUMINUM COLANDER

Colanders are one-piece, deep drawn. For washing and draining fruits and vegetables.

ITEM	DESCRIPTION	CAPACITY		DIAMETER		DEPTH		PACK
		QT	L	IN	CM	IN	CM	
1607A	Without Handles	12	11.3	12 3/4	32.4	5 3/8	13.7	6
1606A	Without Handles	15	14.2	16	40.6	6 3/4	17.1	6
1606H	With Handles	15	14.2	16	40.6	6 3/4	17.1	6



### STAINLESS STEEL FOOTED COLANDER

Stainless steel colander with a mirror finish. Exceptionally durable and dent-resistant.

ITEM	CAPACITY		TOP DIAMETER		PACK
	QT	L	IN	CM	
R23	3	2.8	9 3/8	23.8	6
R27	5	4.8	10 1/2	26.7	6
R33	8	7.6	13 3/8	34	6
R39	13	12.3	16 3/8	41.6	6





S500 Series

## MIXING BOWLS

The 500 series mixing bowls are a lighter weight but quality is not compromised. Tough stainless steel is mirror polished, with a rolled edge. Cleanup is especially quick and easy with the polished finish. Available in a variety of sizes. Capacities are approximate.

ITEM	CAPACITY		DIAMETER		PACK
	QT	L	IN	CM	
S571	3/4	.7	6 1/2	16.5	12
S572	1 1/2	1.4	7 3/4	19.6	12
S573	3	2.8	9 1/2	24.1	12
S574	4	3.8	10 3/4	27.3	12
S575	5	4.7	11 1/2	29.2	12
S577	8	7.6	13 1/4	33.6	12
S579	13	12.3	16	40.6	12
S580	16	15.1	17 1/2	44.5	12
S581	20	18.9	18 3/4	47.6	12

## STAINLESS STEEL MIXING BOWLS

The 700 series is the conventional mixing bowl line, combining top quality construction features. Weight is between light and heavy-duty, with mirror polish, stainless steel, and a rolled edge. Cleanup is exceptionally quick and easy. Available in a wide variety of sizes. Capacities are approximate.



S700 Series

ITEM	CAPACITY		DIAMETER		PACK
	QT	L	IN	CM	
S771	3/4	.7	6 1/2	16.5	12
S772	1 1/2	1.4	7 3/4	19.6	12
S773	3	2.8	9 1/2	24.1	12
S774	4	3.8	10 3/4	27.3	12
S775	5	4.7	11 1/2	29.2	12
S776	6 1/4	5.9	12 1/2	31.8	12
S777	8	7.6	13 1/4	33.6	12
S778	10 1/2	9.9	15	38.1	12
S779	13	12.3	16	40.6	12
S780	16	15.1	17 1/2	44.5	12
S781	20	18.9	18 3/4	47.6	12

## HEAVY-DUTY MIXING BOWLS

The heavy-duty 800 series mixing bowls are built to withstand rough commercial use and made of tough stainless steel, a mirror polish, and a rolled edge. Cleanup is exceptionally quick and easy. Available in a wide variety of sizes. Capacities are approximate.



S800 Series

ITEM	CAPACITY		DIAMETER		PACK
	QT	L	IN	CM	
S871	3/4	.7	6 1/2	16.5	12
S872	1 1/2	1.4	7 3/4	19.6	12
S873	3	2.8	9 1/2	24.1	12
S874	4	3.8	10 3/4	27.3	12
S875	5	4.7	11 1/2	29.2	12
S876	6 1/4	5.9	12 1/2	31.8	12
S877	8	7.6	13 1/4	33.6	12
S878	10 1/2	9.9	15	38.1	12
S879	13	12.3	16	40.6	12
S880	16	15.1	17 1/2	44.5	12
S881	20	18.9	18 3/4	47.6	12



### MIXING BOWLS

Straight-sided stainless steel. Mirror finish and rolled edges make cleanup easy.

ITEM	CAPACITY		TOP DIAMETER		DEPTH		PACK
	QT	L	IN	CM	IN	CM	
MB1	1	.9	6 1/2	16.5	2 3/4	7	12
MB2	2	1.9	7 3/8	18.7	3 1/8	7.9	12
MB3	3	2.8	8 1/2	21.6	3 1/2	8.9	12

### INSULATED MIXING BOWLS

Satin-finished stainless steel mixing bowls have a double wall for insulation. Insulated bowls can be used in cold table/chest or in other food presentation and display environments.

ITEM	CAPACITY		DIAMETER		PACK
	QT	L	IN	CM	
IMB1	1	.9	6 1/4	15.9	1
IMB2	2	1.9	7 13/16	19.8	1
IMB3	3	2.8	9 3/8	23.8	1



# “Conventional” Line Serving Spoons

Service from steam table pans is easy with medium or heavy gauge stainless steel spoons. Grooved handles add to the durability. Available with solid, perforated or slotted bowls.

Heavy gauge, highly polished spoons with a full-length reinforcement rib.

ITEM	DESCRIPTION	O/A LENGTH		PACK
		IN	CM	
2750	Solid	11	27.9	12
2760	Solid	13	33	12
2770	Solid	15	38.1	12
2752	Perforated	11	27.9	12
2762	Perforated	13	33	12
2772	Perforated	15	38.1	12
2754	Slotted	11	27.9	12
2764	Slotted	13	33	12
2774	Slotted	15	38.1	12



Medium gauge, highly polished spoons.

ITEM	DESCRIPTION	O/A LENGTH		PACK
		IN	CM	
3750	Solid	11	27.9	12
3760	Solid	13	33	12
3770	Solid	15	38.1	12
3752	Perforated	11	27.9	12
3762	Perforated	13	33	12
3772	Perforated	15	38.1	12
3754	Slotted	11	27.9	12
3764	Slotted	13	33	12
3774	Slotted	15	38.1	12



## “RENAISSANCE” LINE SERVING SPOONS

Satin finish serving spoons feature a comfortable grooved handle and heavy-duty stainless steel that will not bend or break with normal use. Super heavy gauge, 18/8 stainless steel with 1.5 mm thickness.

ITEM	DESCRIPTION	O/A LENGTH		PACK
		IN	CM	
4750	Solid	11	27.9	12
4760	Solid	13	33	12
4770	Solid	15	38.1	12
4752	Perforated	11	27.9	12
4762	Perforated	13	33	12
4772	Perforated	15	38.1	12
4754	Slotted	11	27.9	12
4764	Slotted	13	33	12
4774	Slotted	15	38.1	12



## EXTRA LONG HANDLED UTENSILS

You need an extra reach with large stock pots and steam table pans. The long handle is reinforced with a deep groove to ensure easy serving. Extra-long stainless steel utensils for heavy-duty serving.

ITEM	DESCRIPTION	O/A LENGTH		PACK
		IN	CM	
4780	Solid Spoon	18	45.7	12
4783P	Perforated Spoon	18	45.7	12
4781	Solid Spoon	21	53.3	12
4782	Fork	21 1/2	54.6	12
4784P	Perforated Spoon	21	53.3	12

# Plastic Handle Spoons & Portioners

Commercial grade serving spoons and portioners have comfortable black or colored plastic handles, with a hanging hole. A grooved handle adds to the strength and durability. Available solid, perforated or slotted.



## FOOD PORTIONER

Black handle utility portioner can be used for a variety of serving needs.

ITEM	DESCRIPTION	CAPACITY		LENGTH		PACK
		OZ	ML	IN	CM	
5722	Solid	2	59.1	10 1/4	26	12
5722P	Perforated	2	59.1	11 3/4	29.8	12
5723	Solid	3	88.7	9	22.9	12
5723P	Perforated	3	88.7	10 1/4	26	12
5724	Solid	4	118.3	10 1/2	26.7	12
5724P	Perforated	4	118.3	10 1/4	26	12
5728	Solid	8	236.6	10 1/4	26	12
5728P	Perforated	8	236.6	9	22.9	12

## SERVING SPOONS

Heavy gauge steel spoon with a black plastic handle.

ITEM	DESCRIPTION	O/A LENGTH		PACK
		IN	CM	
5750	Solid	11	27.9	12
5760	Solid	13	33	12
5761	Solid - 3 sided	13	33	12
5770	Solid	15	38.1	12
5752	Perforated	11	27.9	12
5762	Perforated	13	33	12
5763	Perforated - 3 sided	13	33	12
5772	Perforated	15	38.1	12
5754	Slotted	11	27.9	12
5764	Slotted	13	33	12
5774	Slotted	15	38.1	12

## ONE-PIECE FOOD PORTIONERS

The long-handled portion controlled spoons are color-coded for quick identification. Five sizes available in both perforated and solid. Bowl and handle made of one-piece construction so bowl will not break off and there is no weld joint where food can collect.



ITEM	DESCRIPTION	HANDLE COLOR	CAPACITY		LENGTH		PACK
			OZ	ML	IN	CM	
5742	Solid	Red	2	59	10 1/2	26.7	12
5742P	Perforated	Red	2	59	10 1/2	26.7	12
5743	Solid	Beige	3	88	10 1/2	26.7	12
5743P	Perforated	Beige	3	88	10 1/2	26.7	12
5744	Solid	Green	4	118	10 1/2	26.7	12
5744P	Perforated	Green	4	118	10 1/2	26.7	12
5746	Solid	Black	6	176	10 1/2	26.7	12
5746P	Perforated	Black	6	176	10 1/2	26.7	12
5748	Solid	Blue	8	236	10 1/2	26.7	12
5748P	Perforated	Blue	8	236	10 1/2	26.7	12

www.kitchenwarehousevi.com



# “Conventional” Line Ladles

A wide range of capacities and handle lengths ensure the right tool for the job. The heavy gauge ladles have a satin finish, making cleanup easy. The hooked handle rests on the rim of the pot or can be used for hanging.

ITEM	CAPACITY		HANDLE		PACK
	OZ	ML	IN	CM	
273912	1/2	14.8	10 1/2	26.7	12
2741	1	29.6	10 1/2	26.7	12
274112	1 1/2	44.4	9	22.9	12
2742	2	59.1	10 1/4	26	12
2743	3	88.7	10	25.4	12
2744	4	118.3	12	30.5	12
2746	6	177.4	11 3/4	29.8	12
2748	8	236.5	12 1/4	31.1	12
2712	12	354.8	12 1/4	31.1	12
2716	16	473.1	14 3/4	37.5	12
2724	24	709.7	14 3/4	37.5	12
2732	32	946.2	14 3/4	37.5	12



## “DEMI” LINE LADLES

A smaller capacity and length makes these perfect for serving delicate fruits, sauces, condiments or gravies from smaller containers. Mirror polished, 18/8 stainless steel construction features a grooved and hooked handle.

ITEM	CAPACITY		HANDLE		PACK
	OZ	ML	IN	CM	
0404	1/2	14.8	4 3/4	12	12
0405	1	29.6	5	12.7	12

## “RENAISSANCE” LINE LADLES

Super heavy-duty is the only way to describe these ladles. The satin finish 18/8 stainless steel is 2.5 mm thick. With capacities ranging from 1/2 to 12 ounces, they'll provide years of dependable service, whether you're feeding a small town or an army.



ITEM	CAPACITY		HANDLE		PACK
	OZ	ML	IN	CM	
3739	1/2	14.8	9	22.9	12
3740	3/4	22.2	9	22.9	12
3741	1	29.6	9 1/4	23.5	12
374112	1 1/2	44.4	8 3/4	22.2	12
3742	2	59.1	10 1/4	26	12
3743	3	88.7	10 1/4	26	12
3744	4	118.3	12 1/2	31.8	12
3746	6	177.4	12 1/2	31.8	12
3748	8	236.5	12 1/2	31.8	12
3712	12	354.8	12	30.5	12

## FLAT BOTTOM PIZZA LADLES

The flat bottom design is made to spread sauce evenly on pizza crust.

ITEM	CAPACITY		HANDLE		PACK
	OZ	ML	IN	CM	
86113	5	147.9	15	38.1	12
61116	6	177.4	15	38.1	12





### 1 PC. LADLE W/ BLACK PVC HANDLES

A new addition to the "Optima" line of ladles with a black utility grip handle.

ITEM	CAPACITY		HANDLE		PACK
	OZ	ML	IN	CM	
9939BLK	1/2	14.8	10 3/4	27.3	12
994112BLK	1 1/2	44.4	11	27.9	12
9942BLK	2	59.1	11	27.9	12
9943BLK	3	88.7	11 1/2	29.5	12
9944BLK	4	118.3	12	30.5	12
9946BLK	6	177.9	12 3/8	31.4	12
9948BLK	8	236.5	12 1/2	31.8	12
9912BLK	12	354.8	13	33	12



### SOUP LADLES

Ideal handle design for hanging inside vegetable insets or bain marie pots.

ITEM	CAPACITY		HANDLE		
	OZ	ML	IN	CM	PACK
9944L	4	118.3	13	33	12
9946L	6	177.9	14	35.6	12
9948L	8	236.5	14	35.6	12



### DIPPER

Stainless steel dipper for liquids or beverages.

ITEM	DESCRIPTION	CAPACITY		HANDLE		PACK
		OZ	ML	IN	CM	
72919	w/ Solder Seal	32	946.2	12 1/2	31.8	24
72932	w/o Solder Seal	32	946.2	12 1/2	31.8	24

### "ULTRA" LINE LADLES

This is probably the most durable ladle on the market today. With its super heavy-weight, 18/8 stainless steel make-up, and a capacity range up to 12 ounces, this ladle is ideal for thick soups.

ITEM	CAPACITY		HANDLE		
	OZ	ML	IN	CM	PACK
7739	1/2	14.8	9	22.8	12
7741	1	29.6	9 1/4	23.5	12
7742	2	59.1	9 1/4	23.5	12
7743	3	88.7	10	25.4	12
7744	4	118.3	13	33	12
7746	6	177.4	13	33	12
7748	8	236.5	13 1/2	34.3	12
7712	12	354.8	15	38.1	12



### “OPTIMA” LINE LADLES

These ladles have a beautiful mirror finish. The stainless steel, one-piece construction has a reinforced, grooved handle to remain rigid for excellent serving control. They also come with color-coded plastic handles (see below) for easy capacity identification.

ITEM	CAPACITY		HANDLE		PACK
	OZ	ML	IN	CM	
8839	1/2	14.8	10 3/4	27.3	12
8841	1	29.6	11	27.9	12
8842	2	59.1	11	27.9	12
8843	3	88.7	11 1/2	29.2	12
8844	4	118.3	12	30.5	12
8846	6	177.9	12 3/8	31.4	12
8848	8	236.5	12 1/2	31.8	12
8812	12	354.8	13	33	12
8816	16	473.1	13	33	12



### “OPTIMA” SHORT-HANDLED LADLES

ITEM	CAPACITY		HANDLE		PACK
	OZ	ML	IN	CM	
8839SH	1/2	14.8	5 1/2	14	12
8841SH	1	29.6	5 1/2	14	12
884112SH	1 1/2	44.4	5 1/2	14	12
8842SH	2	59.1	5 1/2	14	12
8843SH	3	88.7	5 1/2	14	12
8844SH	4	118.3	5 1/2	14	12



### “OPTIMA” LINE COLOR-CODED LADLES

ITEM	DESCRIPTION	CAPACITY		HANDLE		PACK
		OZ	ML	IN	CM	
8839GR	Green	1/2	14.8	10 3/4	27.3	12
8841BLK	Black	1	29.6	11	27.9	12
884112WH	White	1 1/2	44.4	11	27.9	12
8842BL	Blue	2	59.1	11	27.9	12
8843IV	Ivory	3	88.7	11 1/2	29.5	12
8844GY	Gray	4	118.3	12	30.5	12
8846TL	Teal	6	177.9	12 3/8	31.4	12
8848OR	Orange	8	236.5	12 1/2	31.8	12
8812RD	Red	12	354.8	13	33	12

# Can Openers

Ideal for extra-large cans, these can openers are made with a sturdy, cast iron body and handle. The knife and gears are heat-treated and reversible. A full line of replacement parts is also available.



## ALEGACY CAN OPENER

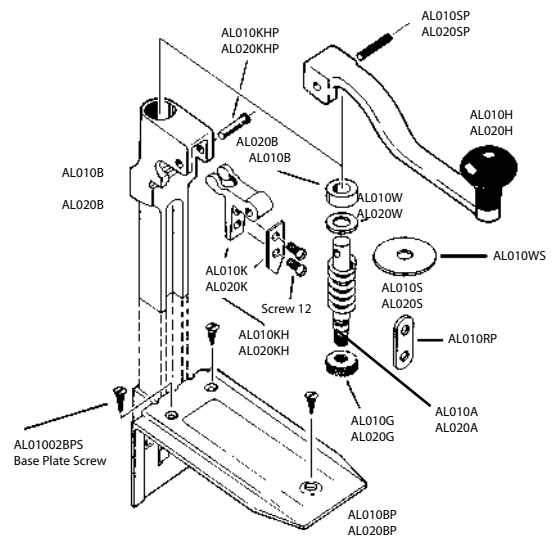
These table models with plated steel base plate open up to gallon size cans. Both models are available with a long bar and all parts are available for replacement.

ITEM	DESCRIPTION	SHAFT LENGTH		PACK
		IN	CM	
AL010	Heavy-Duty Hotel Model	13 1/4	33.7	3
AL010LB	Heavy-Duty Hotel Model - Long Bar	20	50.8	3
AL010NB	Heavy-Duty Hotel Model - Without Base	14	35.6	3
AL020	Standard Restaurant Model	13	33	6
AL020LB	Standard Restaurant Model - Long Bar	15	38.1	6
AL020NB	Standard Restaurant Model - Without Base	11 1/2	29.2	6

## CAN OPENER-PARTS LIST

Specify model numbers. Parts are not interchangeable between sizes.

ITEM	DESCRIPTION	PACK	ITEM	DESCRIPTION	PACK
AL010G	Gear	1	AL01002BPS	Base Plate Screws	1
AL010K	Knife	1	AL020G	Gear	1
AL010RP	Retainer	1	AL020K	Knife	1
AL010SB	Body Only	1	AL020SB	Body Only	1
AL010KH	Knife Holder	1	AL020KH	Knife Holder	1
AL010H	Handle	1	AL020H	Handle	1
AL010A	Arbor/Shaft	1	AL020A	Arbor/Shaft	1
AL010B	Spacer/Bushing	1	AL020B	Spacer/Bushing	1
AL010KHP	Knife Holder Pin	1	AL020KHP	Knife Holder Pin	1
AL010WS	Wheel Spacer	1	AL020S	Spring	1
AL010S	Spring	1	AL020W	Washer	1
AL010W	Washer	1	AL020BP	Base Plate	1
AL010BP	Base Plate	1	AL020SP	Spring Pin	1
AL010SP	Spring Pin	1	SCREW12	Screw	1







### “SWING-A-WAY” PORTABLE CAN OPENER

Chrome-plated rotary knife type, gear operated. Also a cap remover.

ITEM	LENGTH			PACK
	IN	CM		
407	7	17.8		12



### “SWING-A-WAY” WALL CAN OPENER

Cadmium-plated, rotary knife, gear operated, it swivels on wall bracket or fixed positions as desired. Also a cap remover.

ITEM	DESCRIPTION	LENGTH		
		IN	CM	PACK
607	w/ Lid Magnet	7	17.8	6

### 6 COMPARTMENT MESS TRAY

The stainless steel, polished finish trays won't bend or warp like plastic trays.

ITEM	IN	CM	THICKNESS	PACK
1216SS	12 x 16	30.5 x 40.6	.6 mm	24



### NYLON UTENSILS

Protect your non-stick or delicate surfaces with nylon utensils.

ITEM	DESCRIPTION	LENGTH		
		IN	CM	PACK
70843	Spoon	12 1/4	31	12
70846	Turner	13	33	12

### STAINLESS STEEL CUTLERY BOX

Stainless steel, polished finish, wire beaded edge with four seamless compartments and an open bottom. Trim size box fits under counters for convenient storage. Easy to sanitize.

ITEM	IN	CM	PACK
289	10 x 16 1/2 x 3 5/8	25.4 x 41.9 x 9.2	8



www.kitchenwarehousevi.com

# Ice Cream Dishers

Our two lines of ice cream dishers look very similar but are built differently to accommodate your needs. The economy line is sturdy and cost-effective, while the premium line is long lasting, paying off in the long run.



## ICE CREAM/FOOD DISHERS

Sizes are indicated by handle color and stamped on the bowl knife blade for easy portion control. Disher is stainless steel with all metal part and meets U.S. government standards. Individually boxed.

ITEM	SIZE	CAPACITY		HANDLE COLOR	PACK
		OZ	ML		
AL1266	6	4 2/3	138	White	1
AL1268	8	4	118.3	Gray	1
AL12610	10	3 3/4	110.9	Cream	1
AL12612	12	3 1/4	96.1	Green	1
AL12616	16	2 3/4	81.3	Blue	1
AL12620	20	2 1/2	73.9	Yellow	1
AL12624	24	1 3/4	51.8	Red	1
AL12630	30	1 1/4	37	Black	1
AL12640	40	7/8	25.9	Purple	1



## ECONOMY ICE CREAM/FOOD DISHERS

The budget minded operator will enjoy these functional economy ice cream dishers. Sizes are indicated by handle color. Disher is stainless steel and is individually boxed.

ITEM	SIZE	CAPACITY		HANDLE COLOR	PACK
		OZ	ML		
AL1286	6	4 2/3	138	White	1
AL1288	8	4	118.3	Gray	1
AL12810	10	3 3/4	110.9	Cream	1
AL12812	12	3 1/4	96.1	Green	1
AL12816	16	2 3/4	81.3	Blue	1
AL12820	20	2 1/2	73.9	Yellow	1
AL12824	24	1 3/4	51.8	Red	1
AL12830	30	1 1/4	37	Black	1
AL12840	40	7/8	25.9	Purple	1



### SPECIALTY ICE CREAM/FOOD DISHERS

Three sizes and shapes of plastic handled dishers provide the tools to make a truly fabulous and rare presentation. Individually boxed.

ITEM	SHAPE	SIZE	CAPACITY		PACK
			OZ	ML	
HDU12225	Heart	25	1 3/8	40	1
SDU12220	Square	20	1 5/8	50	1
SDU12230	Square	30	1 2/15	33.3	1



### STAINLESS STEEL ICE CREAM DISHERS

Dishers/portioners are all stainless steel with a twin grip. Sizes are stamped on the bowl knife blade. Individually boxed.



ITEM	SIZE	CAPACITY		PACK
		OZ	ML	
E1256	6	4 2/3	138	1
E1258	8	4	118.3	1
E12510	10	3 3/4	110.9	1
E12512	12	3 1/4	96.1	1
E12516	16	2 3/4	81.3	1
E12520	20	2 1/2	73.9	1
E12524	24	1 3/4	51.8	1
E12530	30	1 1/4	37	1
E12540	40	7/8	25.9	1
E12550	50	5/8	18.5	1
E12560	60	9/16	16.6	1
E12570	70	31/64	14.3	1
E125100	100	3/8	11.1	1



### ICE CREAM/FOOD DISHERS

These high quality, solid brass and chrome-plated dishers have a round bowl, with the capacity measurement stamped on the blade. A twin grip handle operates the stainless steel spring for easy portion release.



### PLASTIC HANDLE ICE CREAM/FOOD DISHERS

Plastic handle dishers provide a lighter weight food disher. The portion capacity is identified by a size stamp on the round bowl knife blade. Individually boxed.

ITEM	SIZE	CAPACITY		PACK
		OZ	ML	
U1218	8	4 1/10	121.2	1
U12110	10	2 5/8	77.6	1
U12112	12	2 1/4	66.5	1
U12116	16	1 2/3	49.3	1
U12120	20	1 1/2	44.4	1
U12124	24	1 1/10	32.5	1
U12130	30	15/16	27.7	1
U12140	40	13/16	24	1
U12150	50	11/16	20.3	1
U12160	60	9/16	16.6	1
U12170	70	3/8	11.1	1
U121100	100	1/4	7.4	1

ITEM	SIZE	CAPACITY		PACK
		OZ	ML	
U1228	8	4 1/10	121.2	1
U12210	10	2 5/8	77.6	1
U12212	12	2 1/4	66.5	1
U12216	16	1 2/3	49.3	1
U12220	20	1 1/2	44.4	1
U12224	24	1 1/10	32.5	1
U12230	30	15/16	27.7	1
U12240	40	13/16	24	1
U12250	50	11/16	20.3	1
U12260	60	9/16	16.6	1
U12270	70	3/8	11.1	1
U122100	100	1/4	7.4	1



**OVAL ICE CREAM DISHER**

Highest quality solid brass, chrome-plated with a stainless steel spring. Twin grip with the sizes stamped on bowl knife blade. Individually boxed.



ITEM	SIZE	CAPACITY		
		OZ	ML	PACK
ODU12130	30	15/16	27.7	1

**ICE CREAM DIPPER**

High quality German made dipper has no moving parts that can bend or break. It releases portions instantly, defrosts automatically, and works well for left or right hand. Individually boxed.

ITEM	SIZE	PACK
ALST12	12	1
ALST16	16	1
ALST20	20	1
ALST24	24	1
ALST30	30	1
ALST40	40	1



**ICE CREAM SPADE**

Spade is a one-piece stainless steel blade with a black plastic handle.

ITEM	O/A LENGTH		PACK
	IN	CM	
114X	9	22.9	12



**ONE-PIECE ALUMINUM ICE CREAM DIPPER**

High quality polished aluminum dipper has no moving parts that can break. It releases portions instantly, defrosts automatically, and works well for left or right hand. Individually boxed.

ITEM	SIZE	PACK
AL12SD	12	1
AL16SD	16	1
AL20SD	20	1
AL24SD	24	1
AL30SD	30	1

**NON-STICK ONE-PIECE ALUMINUM ICE CREAM DIPPER**

This high-tech dipper releases instantly and defrosts automatically. Food particles won't stick to the non-stick coating, and the one-piece construction has no moving parts to break. It is naturally balanced for left or right handed operation. The dipper cleans easily with a soft cloth or sponge. Individually boxed.

ITEM	SIZE	PACK
82012	12	1
82016	16	1
82020	20	1
82024	24	1
82030	30	1



## PLASTIC SCOOP

One-piece durable plastic construction. It is dishwasher safe, non-toxic, and available in red or white. Ideal for dry cereal, flour, and sugar.



ITEM	DESCRIPTION	BOWL SIZE		PACK
		IN	CM	
840PSW	White	6 1/4 x 3 1/4 x 2 3/8	15.9 x 8.3 x 6	48
840PSR	Red	6 1/4 x 3 1/4 x 2 3/8	15.9 x 8.3 x 6	48

## STAINLESS STEEL SCOOPS

These stainless steel scoops offer versatility of use for both dry and wet products. The scoops have a mirror polished finish outside and inside.

ITEM	CAPACITY		BOWL SIZE		PACK
	OZ	ML	IN	CM	
SS10008	1.5	44.4	3 5/16 x 1 5/8	8.4 x 4.1	12
SS100010	2	59.2	3 3/4 x 2	9.5 x 5.1	12
SS100012	3.5	103.6	4 3/4 x 2 5/16	12 x 5.9	12
SS100014	6	177.6	5 1/2 x 2 3/4	14 x 7	12
SS100015	8	236.8	6 x 3 1/2	15.2 x 8.9	12



## PLASTIC SCOOP - FLAT BOTTOM

One-piece durable plastic. Dishwasher safe and non-toxic. Often used for ice bins.

ITEM	CAPACITY		BOWL SIZE		PACK
	OZ	ML	IN	CM	
15173	82	2424.7	9 1/2 x 5 3/4 x 3 1/2	24.1 x 14.6 x 8.9	36



## STAINLESS STEEL BAR SCOOP

Tapered shape is perfect for scooping ice into glasses. The handle is welded to the bowl. Sturdy 18/8 stainless steel.

ITEM	O/A LENGTH		
	IN	CM	PACK
246	9 1/2	24.1	12



## ALUMINUM SCOOPS

Scoop is made of die-cast aluminum, highly polished inside and outside. The handle has a grooved finish with finger grip to prevent slipping.

ITEM	CAPACITY		BOWL SIZE		PACK
	OZ	ML	IN	CM	
100012	5	147.9	4 3/4 x 2 3/8	12.1 x 6	12
100016	12	354.8	5 7/8 x 3 1/8	14.9 x 13	12
100020	24	709.7	7 1/4 x 4	18.4 x 10.2	12
100023	38.8	1147.3	8 3/4 x 4 3/4	22.2 x 12.1	12
100026	57.5	1700.3	10 1/2 x 5 1/2	26.7 x 14	12
100030	84.5	2498.7	12 x 6 1/4	30.5 x 15.9	12



## ICE SCOOPS

Scoop is die-cast aluminum, one-piece with a polished finish.

ITEM	O/A LENGTH		
	IN	CM	PACK
123	9	22.8	12
248	8	20.3	12

## ALUMINUM SCOOPS - FLAT BOTTOM

Scoop is made of one-piece cast aluminum with a tumbled finish. Now comes in three convenient sizes.

ITEM	CAPACITY		BOWL SIZE		PACK
	OZ	ML	IN	CM	
B147	7	207	5 1/2 x 3 1/4	14 x 8.3	12
B175	16	473.1	7 x 4 1/4	17.8 x 10.8	12
B172	44	1301.5	8 1/2 x 5 1/2	21.6 x 14	12



**STAINLESS STEEL FRENCH WIRE WHIP**

18/8 stainless steel, available in silver soldered or epoxy. Thicker wires for whipping eggs, egg whites, and heavier food products.

**SOLDERED**

ITEM	O/A LENGTH		PACK
	IN	CM	
FW10	10	25.4	12
FW12	12	30.5	12
FW14	14	35.6	12
FW16	16	40.6	12
FW18	18	45.7	12
FW20	20	50.8	12
FW22	22	55.8	12
FW24	24	60.9	12

**EPOXY**

ITEM	O/A LENGTH		PACK
	IN	CM	
FW310	10	25.4	12
FW312	12	30.5	12
FW314	14	35.6	12
FW316	16	40.6	12
FW318	18	45.7	12
FW320	20	50.8	12
FW322	22	55.8	12
FW324	24	60.9	12



Soldered Finish



Epoxy Finish

**STAINLESS STEEL PIANO WIRE WHIP**

18/8 stainless steel, available in silver soldered or epoxy. For whipping delicate sauces and toppings.

**SOLDERED**

ITEM	O/A LENGTH		PACK
	IN	CM	
PW10	10	25.4	12
PW12	12	30.5	12
PW14	14	35.6	12
PW16	16	40.6	12
PW18	18	45.7	12

**EPOXY**

ITEM	O/A LENGTH		PACK
	IN	CM	
PW310	10	25.4	12
PW312	12	30.5	12
PW314	14	35.6	12
PW316	16	40.6	12
PW318	18	45.7	12



**LONG HANDLE WHIP**

Sturdy, long handle is perfect for deep mixer bowls. Stainless steel with ball or tear drop design.

ITEM	STYLE	O/A LENGTH		PACK
		IN	CM	
MW40	Tear Drop	40	101.6	1
KW49	Ball	49	124.5	1

www.kitchenwarehousevi.com



### ROUND FACE MASHER

Easy-to-clean stainless steel face with a chrome-plated or stainless steel handle.

ITEM	DESCRIPTION	LENGTH		BASE DIAMETER		PACK
		IN	CM	IN	CM	
1726	All Stainless Steel	25	63.5	5	12.7	1



### WOODEN SPOON

Standard weight wooden spoon is for light-duty use.

ITEM	O/A LENGTH		PACK
	IN	CM	
8310	10	25.4	12
8312	12	30.5	12
8314	14	35.6	12
8316	16	40.6	12
8318	18	45.7	12

### EXTRA HEAVY WOODEN SPOON

Extra heavy weight spoons for commercial and institutional use.

ITEM	O/A LENGTH		PACK
	IN	CM	
8310EH	10	25.4	12
8312EH	12	30.5	12
8314EH	14	35.6	12
8316EH	16	40.6	12
8318EH	18	45.7	12



### HEAVY-DUTY WOODEN SPOON

High-density hardwood spoon with superior finish, for professional applications.

ITEM	O/A LENGTH		
	IN	CM	PACK
8310HD	10	25.4	12
8312HD	12	30.5	12
8314HD	14	35.6	12
8316HD	16	40.6	12

### LONG HANDLE HEAVY WOODEN SPOON

Professional quality, size, and weight.

ITEM	O/A LENGTH		
	IN	CM	PACK
8424EH	24	60.9	12
8428EH	28	71.1	12
8432EH	32	81.3	12



### MASHER-SQUARE FACE WOOD HANDLE

Nickel-plated with a base of one continuous piece and a hardwood handle.

ITEM	LENGTH		BASE		PACK
	IN	CM	IN	CM	
1618	18	45.7	4 x 5	10.2 x 12.7	12
1623	23	58.4	5 x 5 3/4	12.7 x 14.6	12



### MASHER-ROUND FACE WOOD HANDLE

Nickel-plated with base rods securely welded and a hardwood handle. Long handles easily reach into deep pots.

ITEM	LENGTH		BASE DIAMETER		PACK
	IN	CM	IN	CM	
1718	18	45.7	4 1/2	11.4	12
1725	25	63.5	5	12.7	12



### STAINLESS STEEL SPRING TONGS

Pioneered with AISI 430 2B stainless steel, these heavy-duty tongs provide high quality corrosion resistance in the toughest kitchen environments. They are spring operated with a scalloped edge, available in three weights.

#### STANDARD

ITEM	DESCRIPTION	THICKNESS		LENGTH		PACK
		IN	MM	IN	CM	
3511	Standard	.02	.5	9 1/2	24.1	12
3511EH	Heavy	.03	.8	9 1/2	24.1	12
2511	Extra Heavy	.04	1	9 1/2	24.1	12
3512	Standard	.02	.5	12	30.5	12
3512EH	Heavy	.03	.8	12	30.5	12
2512	Extra Heavy	.04	1	12	30.5	12
3513	Standard	.02	.5	16	40.6	12
3513EH	Heavy	.03	.8	16	40.6	12
2513	Extra Heavy	.04	1	16	40.6	12
3511S	Spring Only					

#### ECONOMY

Common grade stainless steel with a scalloped edge. Available in three weights.

ITEM	DESCRIPTION	THICKNESS		LENGTH		PACK
		IN	MM	IN	CM	
6511	Standard	.02	.5	9 1/2	24.1	12
7511	Heavy	.03	.8	9 1/2	24.1	12
8511	Extra Heavy	.04	1	9 1/2	24.1	12
6512	Standard	.02	.5	12	30.5	12
7512	Heavy	.03	.8	12	30.5	12
8512	Extra Heavy	.04	1	12	30.5	12
6513	Standard	.02	.5	16	40.6	12
7513	Heavy	.03	.8	16	40.6	12
8513	Extra Heavy	.04	1	16	40.6	12

### LOCKING TONG

Stainless steel quality tong with locking mechanism to keep tongs orderly for storage.

ITEM	LENGTH			PACK
	IN	CM		
9511	9 1/2	24.1		12
9512	12	30.5		12
9513	16	40.6		12



### LOCKING TONGS

Spring operated, extra-heavy 1.2 mm thickness. Scalloped edges. Locking mechanism to keep tongs orderly for storage.

ITEM	LENGTH			PACK
	IN	CM		
1009	9 1/2	24.1		12
1012	12	30.5		12
1013	16	40.6		12



### SPRING TONG

Scalloped gripping edges, spring operated.

ITEM	LENGTH			PACK
	IN	CM		
3507	7	17.8		12

### STAINLESS STEEL TONG

One-piece construction is easy to handle and clean.



ITEM	LENGTH			PACK
	IN	CM		
11511	6 1/2	16.5		12
11521	9	22.9		12
11531	12	30.5		12



### SPAGHETTI TONG

Designed to easily serve cooked noodles. Spring steel with blunted tip on each side.

ITEM	LENGTH			PACK
	IN	CM		
5313	7 1/2	19.1		12



### SPRING TONG

Spring operated, extra-heavy 1.2 mm thickness. Scalloped edges.

ITEM	LENGTH			PACK
	IN	CM		
4511	9 1/2	24.1		12
4512	12	30.5		12
4513	16	40.6		12



### COLORCODE SYSTEM STAINLESS TONGS

Scalloped edge tongs with color-coding takes the risk and guess work out of cross-contamination. Also available in black for general utility.

ITEM	DESCRIPTION	LENGTH		PACK
		IN	CM	
5511BK	Black	9 1/2	24.1	12
5511BL	Blue	9 1/2	24.1	12
5511GR	Green	9 1/2	24.1	12
5511RD	Red	9 1/2	24.1	12
5511TN	Tan	9 1/2	24.1	12
5511WH	White	9 1/2	24.1	12
5511YL	Yellow	9 1/2	24.1	12
5512BK	Black	12	30.5	12
5512BL	Blue	12	30.5	12
5512GR	Green	12	30.5	12
5512RD	Red	12	30.5	12
5512TN	Tan	12	30.5	12
5512WH	White	12	30.5	12
5512YL	Yellow	12	30.5	12
5513BK	Black	16	40.6	12
5513BL	Blue	16	40.6	12
5513GR	Green	16	40.6	12
5513RD	Red	16	40.6	12
5513TN	Tan	16	40.6	12
5513WH	White	16	40.6	12
5513YL	Yellow	16	40.6	12



### STAINLESS STEEL TONG WITH CLAW

Ideal for use with ice, cakes or pastries.

ITEM	DESCRIPTION	LENGTH		PACK
		IN	CM	
1157	Scalloped	7 1/4	18.4	12
1158	w/ "Chicken Feet"	6 1/2	16.5	12

### SERVING TONG

Nickel-plated scissor type.



ITEM	LENGTH			PACK
	IN	CM		
50P	8	20.3		12



### HEAVY-DUTY TONGS

Chrome-plated, professional quality scissor type. For serving meats and other heavier items.

ITEM	LENGTH			PACK
	IN	CM		
N186	14 1/2	36.8		12



### PLASTIC TONG

Tongs are unbreakable crystal clear lexan with scalloped gripping edges. For serving rolls and pastries.

ITEM	LENGTH			PACK
	IN	CM		
3511P	9	22.8		12
3512P	12	30.5		12

www.kitchenwarehousevi.com



### HINGED FORK-SPOON SALAD SET

Fork and spoon are hinged at the center. They can also be used separately. Great for use in salad bars and buffet lines.

ITEM	LENGTH			PACK
	IN	CM		
0113	11 1/2	29.2		12



### DOUGH SCRAPER

Stainless steel blade with nickel-plated rivets. Excellent for dividing dough and scraping dough from flat surfaces.

ITEM	DESCRIPTION	IN	CM	PACK
182DS	Hardwood	4 x 6	10.2 x 15.2	12
182PH	Plastic	4 x 6	10.2 x 15.2	12
183	Hardwood	5 x 7	12.7 x 17.8	12

### BOWL SCRAPER

Flexible plastic forms easily to bowl surfaces and the firm flat edge allows for many creative uses.

LENGTH			
ITEM	IN	CM	PACK
FS8446	5 3/4 x 3 1/2	14.6 x 8.9	144



### SPOON SHAPE SCRAPERS

Plastic handle molded spoon shaped scraper.

LENGTH			
ITEM	IN	CM	PACK
61771	10	25.4	2
61774	14	35.6	1
61777	16	40.7	1

### PLATE SCRAPER

Multipurpose scraper for mixing, scraping, and spreading. Smooth, wooden handle.

LENGTH				
ITEM	DESCRIPTION	IN	CM	PACK
1265	Medium Blade	10	25.4	24
1266	Large Blade	12 1/2	31.7	24



### ONE-PIECE SCRAPER

Plastic handle molded flat plate or bowl scraper.

LENGTH			
ITEM	IN	CM	PACK
71771	10	25.4	24
71774	14	35.5	12
71777	16	40.6	12



### HIGH HEAT SCRAPERS - UP TO 600°

The flat silicone blade and nylon handled scrapers are designed to withstand high heat applications, up to 600°F (315°C).

LENGTH			
ITEM	IN	CM	PACK
81771	10	25.4	6
81774	14	35.6	6
81777	16	40.7	6



### HIGH HEAT SPOON SHAPE SCRAPERS - UP TO 600°

Crafted for versatility, these spoon shaped scrapers can withstand temperatures up to 600°F (315°C).

LENGTH			
ITEM	IN	CM	PACK
91771	10	25.4	6
91774	14	35.6	6
91777	16	40.7	6





**SQUARE GRATER**

Stainless steel grater for grating or slicing meats, cheeses, and potatoes.

ITEM	HEIGHT		PACK
	IN	CM	
SSG3	8	20.3	12
SSG4	9 1/2	24.1	12



**SQUARE GRATER**

These graters both have two grating and two slicing surfaces.

ITEM	DESCRIPTION	HEIGHT		PACK
		IN	CM	
3199	Stainless Steel	9	22.9	12

**ALUMINUM EGG WEDGER**

Divider is polished, die-cast aluminum with heavy-duty spring. It cuts six equal sections of egg.



ITEM	HEIGHT		PACK
	IN	CM	
A133	4 3/4	12	1



**SQUARE GRATER**

Four different grating surfaces for fine to coarse grating. Made of easy-to-clean stainless steel.

ITEM	HEIGHT		PACK
	IN	CM	
SSG449	9	22.9	24

**SINGLE EGG SLICER**

Cut egg slices quickly for salads and garnishes with this die-cast, polished aluminum slicer.

ITEM	DIAMETER		PACK
	IN	CM	
230	4 1/4	10.8	12





### ALUMINUM CHEESE SLICER

Slicer is die-cast polished aluminum with an adjustable roller. Avoids the high cost of buying pre-sliced cheese.

ITEM	DESCRIPTION	WIRE LENGTH		PACK
		IN	CM	
386	Individually Packed	4	10.1	12
386W	Wire Only	4	10.1	12

### ALUMINUM BUTTER CUTTER

Quarter-pound sections can be cut into 18 pieces for tabletop serving. The die-cast frame is piano wire bound. Eliminates the need for pre-packaged butter patties.

ITEM		LENGTH		PACK
		IN	CM	
291		7 3/4	19.7	12



### STAINLESS STEEL PARER/CORER WITH WOODEN HANDLE

Combination paring knife has a special coring tip and comfortable wooden handle for easy fruit prep.

ITEM	MATERIAL	LENGTH		PACK
		IN	CM	
439D	Heavy Blue Steel	7	17.8	12



### PEELER

Fruit and vegetable peeler with double edge floating blade. Serrated blade can be used for scraping and coring.

ITEM	DESCRIPTION	BLADE LENGTH		PACK
		IN	CM	
3K	Nickel-Plated	2 1/2	6.3	12
5KP	All Stainless Steel	2 1/2	6.3	12



### APPLE DIVIDER

Die-cast metal with rustproof knives. Cuts 14 equal slices and cores apples at the same time.

ITEM	DIAMETER		SLICES	PACK
	IN	CM		
A134	3 1/2	8.9	14	1



### GARLIC PRESS

Press individual garlic cloves through holes for cooking sized garlic pieces with this economical, die-cast aluminum press.

ITEM	LENGTH		PACK
	IN	CM	
777	6	15.2	12



### HEAVY-DUTY GARLIC PRESS

Die-cast aluminum of heavy-duty construction. The plate of poly teeth push through holes for thorough self-cleaning.

ITEM	LENGTH		PACK
	IN	CM	
1777WP	8	20.3	12



### FRUIT OR VEGETABLE SCOOP

Perfect for making melon balls. Polished steel bowl with a wooden or plastic handle.

ITEM	HANDLE	BOWL DIAMETER		LENGTH		PACK
		IN	CM	IN	CM	
1226	Wood	1 / 1 1/4	2.5 / 3.1	7	17.8	12
1226PH	Plastic	1 / 1 1/4	2.5 / 3.1	7	17.8	12



### GARNISH/SERRATOR

Stainless steel corrugated blade with a hardwood handle. Use to make french fries, carrot slices, and garnishes.

ITEM	BLADE DIMENSIONS			PACK
	IN	CM		
923P	7 1/4 x 2	18.4 x 5.1		12



### TOMATO CORER

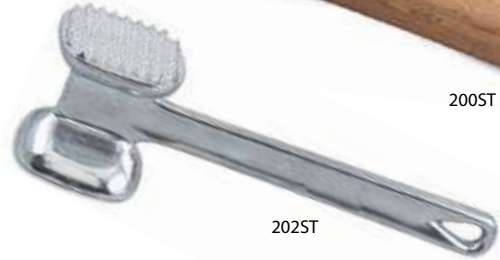
Extract tomato cores with our handy, stainless steel corer.

ITEM	DESCRIPTION	BOWL DIAMETER		LENGTH		PACK
		IN	CM	IN	CM	
TC1	Stainless Steel	3/4	1.9	4 1/4	10.8	24

### STEAK TENDERIZER

Hardwood handle with a cast aluminum head, one face is coarse cut and the other is fine cut for different degrees of tenderizing. 202ST is all aluminum.

ITEM	MALLET		LENGTH		PACK
	IN	CM	IN	CM	
200ST	2 x 4 1/4	5.1 x 10.8	10 1/2	26.7	12
201ST	3 x 3	7.6 x 7.6	13	33	12
202ST	2 1/2 x 3	6.4 x 7.6	10 1/2	26.7	12



200ST

202ST

### ALL-PURPOSE BASTER

Rubber with a nylon tube.

ITEM	LENGTH		
	IN	CM	PACK
2220	11	27.9	12



### STAINLESS STEEL WIRE SKEWER

Reusable, easy-to-clean skewer for cooking and serving. Polished stainless steel with a loop handle and a pointed end.

ITEM	LENGTH			WIRE	PACK
	IN	CM			
N125	5	12.7		Round	144
N127	8	20.3		Round	144
N130	10	25.4		Round	144



### OVAL WIRE SKEWER

Polished stainless steel with a loop handle and a pointed end. Oval wire design makes it easier to insert skewer into food.

ITEM	LENGTH		
	IN	CM	PACK
8SO	8	20.3	144
10SO	10	25.4	144
12SO	12	30.5	144



### ROUND WIRE SKEWER

Polished stainless steel, for faster cooking of foods, with a loop handle and a pointed tip.

ITEM	LENGTH		
	IN	CM	PACK
8RS	8	20.3	144
10RS	10	25.4	144
12RS	12	30.5	144



### PLASTIC CORN HOLDERS

Simulated yellow corn handles with nickel prongs safely and securely hold corn cobs.

ITEM	LENGTH		
	IN	CM	PACK
1522	2 1/2	6.3	144





### STAINLESS STEEL ROTARY FOOD MILL

Stainless steel food mill with fine, medium, and coarse screens. Purees, strains, and mashes a wide variety of fruits and vegetables.

ITEM	CAPACITY		
	QT	L	PACK
40SS	5	4.7	1



### FOOD MILL

Heavy stainless steel bowl with perforated, conical shaped bottom. Has an adjustable straining blade. Strains or purees fruits, vegetables, and more.

ITEM	CAPACITY		
	QT	L	PACK
501SS	2	1.9	6
5012SS	3 1/2	3.3	3



### ROTARY EGG BEATER

Stainless steel beater and shaft with nylon gears and a plastic handle.

ITEM	LENGTH		
	IN	CM	PACK
947EB	10	25.4	12

### STAINLESS STEEL POTATO RICER

Stainless steel with bowl securely welded to frame. Heavy-duty large portion model.



ITEM	O/A LENGTH		CUP SIZE		PACK
	IN	CM	IN	CM	
3RS	17	43.1	5 1/2 x 4 3/4	14 x 12.1	1

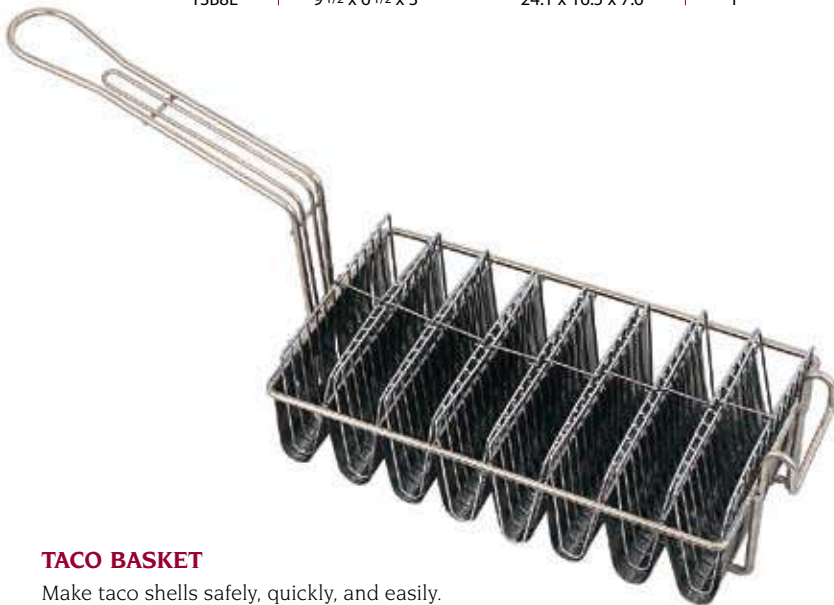
[www.kitchenwarehousevi.com](http://www.kitchenwarehousevi.com)



### TOSTADA BASKET

Make freshly fried tostadas every day with this heavy-duty polished chrome finish tostada basket.

ITEM	IN	CM	PACK
TSB8L	9 1/2 x 6 1/2 x 3	24.1 x 16.5 x 7.6	1



### TACO BASKET

Make taco shells safely, quickly, and easily. Handle has a low heat-transferring design. Heavy-duty construction features a fry kettle hook and a polished chrome finish. For use in 28-35 lb or larger fry kettles. Molds up to 8 shells per load.

ITEM	IN	CM	PACK
TB8M	12 x 7 1/4 x 4	30.5 x 18.4 x 10.2	1

### STEAK WEIGHT

Weights are cast aluminum or iron, with a ribbed flat bottom and a wooden handle that will not heat up. Keeps edges of steaks from curling during cooking.

ITEM	DESCRIPTION	IN	CM	PACK
705	Aluminum	8 1/4 x 4 1/4	20.9 x 10.8	12
709	Gray Iron	8 1/4 x 4 1/4	20.9 x 10.8	12
706	Gray Iron	9 x 5 1/4	22.8 x 13.3	12
707	Aluminum	9 x 5 1/4	22.8 x 13.3	12
708	Aluminum	10 7/8 x 9 1/8	27.6 x 23.1	12



### CULINARY BASKET

For stove top frying of single servings or small orders, as well as breading. Baskets are made of nickel-plated steel wire. Fine mesh is 1/8" (.3 cm), medium mesh is 1/4" (.6 cm), coarse mesh is 1/2" (1.3 cm).

ITEM	DESCRIPTION	DIAMETER		PACK
		IN	CM	
79751	Fine Mesh	8	20.3	6
79754	Fine Mesh	10	25.4	6
79757	Fine Mesh	12	30.5	6
79741	Medium Mesh	8	20.3	6
79744	Medium Mesh	10	25.4	6
79747	Medium Mesh	12	30.5	6
79731	Coarse Mesh	8	20.3	6
79734	Coarse Mesh	10	25.4	6
79737	Coarse Mesh	12	30.5	6



### HAM HOLDER

Makes cooking and carving ham faster and easier. Holder keeps ham out of fats and juices while cooking. 3/16" (.5 cm) chrome-plated wire.

ITEM	IN	TOP DIMENSION		PACK
		CM		
13200	6 1/2 x 6	16.5 x 15.2		1







### LONG-RING MINUTE TIMER

Times in minutes up to one hour and has an insistent ring up to 18 seconds. Blister carded.

ITEM	FACE DIAMETER		
	IN	CM	PACK
1929	2 3/4	6.9	12



### MINUTE TIMER

Times in minutes up to one hour and has a single ring. Blister carded.

ITEM	FACE DIAMETER		
	IN	CM	PACK
2428	2 1/2	6.3	12



### GREASE FILTER CONE RACK

Conical type wire rack holds grease filter cones over draining receptacle.

ITEM	IN	CM	PACK
678	18 3/4 x 9	47.6 x 22.9	12

### GREASE FILTER CONES

Heavy weight filter paper that will filter oil, lard, and other fats used in fryers. Each case has ten boxes with fifty per box.



ITEM	DIAMETER		HEIGHT		PACK
	IN	CM	IN	CM	
678C	10	25.4	9	22.9	10/50's



### ALEGACY SCOURING PAD

Tough nylon webbing makes these pads non-rusting and non-shredding. They rinse clean, are odorless, are economical for all scouring jobs, and are also easy on the hands. They can be used dry but are more effective when wet or with scouring agents.

ITEM	IN	CM	PACK
3400	6 x 9 1/2	15.2 x 24.1	10 Pads per Box 6 Boxes per Case



### LID-OFF

Open plastic pails quickly and easily with this safe, time saving tool. It won't distort lids and allows them to be reclosed.

ITEM	DESCRIPTION	LENGTH		
		IN	CM	PACK
89052	Plastic	7 3/4	19.7	12
89054	Anodized aluminum	7 3/4	19.7	12



### RUBBER SCRAP BLOCK

Made of molded rubber and fits standard worktable openings for efficient disposal of food scraps and peelings.

ITEM	DIAMETER		INSET DIAMETER		COLOR	PACK
	IN	CM	IN	CM		
829W	6 1/2	16.5	4 1/2	11.4	White	1



### STAINLESS STEEL SPONGES

Industrial strength coiled sponges can handle the toughest kitchen cleanup.

ITEM	DIAMETER		
	IN	CM	PACK
AL300	3	7.6	6



### CHEF COAT

Double-breasted 63/35 poly-cotton twill blends, they are extra comfortable and durable.

ITEM	DESCRIPTION	SIZE	PACK
CCW1S	Small	32-34	12
CCW2M	Medium	36-38	12
CCW3L	Large	40-42	12
CCW3XL	Extra Large	48-50	12



### CHEF'S HAT

Professional, classically styled chef's hat is made of 100% cotton, with a velcro closure and three inch headband.

ITEM	HEIGHT		PACK
	IN	CM	
CH13V	10	25.4	48
CH16V	13	33	48



### BIB APRON

Full bib style, made of 50/50 poly-cotton blend with nylon waist ties and two pockets (except BIA1).

ITEM	IN	CM	COLOR	PACK
BIA1	32 x 34	81.2 x 86.3	White	12
BIA2B	32 x 27	81.2 x 68.5	Blue	12
BIA3GR	32 x 27	81.2 x 68.5	Green	12
BIA6BR	32 x 27	81.2 x 68.5	Brown	12
BIA7R	32 x 27	81.2 x 68.5	Red	12

### VINYL APRON

A great apron for bartenders and wait staff because it is water resistant. 32 oz leatherette vinyl.

ITEM	DESCRIPTION	IN	CM	PACK
AP2730	Full Apron	27 x 30	68.5 x 76.2	12



### DISHWASHER'S APRON

Super lightweight, oversized vinyl apron, with plastic grommets and nylon ties.

ITEM	IN	CM	PACK
DA3944	37 x 25	94 x 63.5	12



### GRILL/OVEN MITT

All-cotton fabric is coated with aluminized silicones. Its non-stick coating wipes clean with a damp cloth. Sold in pairs.



#### LENGTH

ITEM	IN	CM	PACK
SOM13	13	33	72 pr
SOM15	15	38.1	72 pr
SOM17	17	43.1	72 pr

### GRILL/OVEN MITT

The fabric is all-cotton, treated to retard fire. Protects up to 400°F and is water and stain repellent. Sold in pairs.

#### LENGTH

ITEM	IN	CM	PACK
POM13	13	33	72 pr
POM15	15	38.1	72 pr
POM17	17	43.1	72 pr
POM24	24	60.9	72 pr



### GRILL/OVEN MITT

100% cotton for a thicker padding, mitt is flame retardant. Sold in pairs.

#### LENGTH

ITEM	IN	CM	PACK
FRM13	13	33	72 pr
FRM15	15	38.1	72 pr
FRM17	17	43.1	72 pr



### HANDLE HOLDER

All-purpose grip protector.



#### LENGTH

ITEM	IN	CM	PACK
AH6	6 1/2	16.4	12

### HAND PROTECTOR

Thick close-knit terry with inside layer for protection against hot liquids.

ITEM	IN	CM	PACK
HP11	8 1/2 x 11	21.6 x 27.9	12



### HANDLE HOLDER

Ideal for handling and serving with cast iron pans. Made from Teflon® coated cotton.

#### LENGTH

ITEM	IN	CM	PACK
HP1T	6 1/2	16.5	12



### POT HOLDER

Silicone with a metallic silver finish. Wipes clean easily.

ITEM	IN	CM	PACK
PHS8	8 x 8	20.3 x 20.3	12